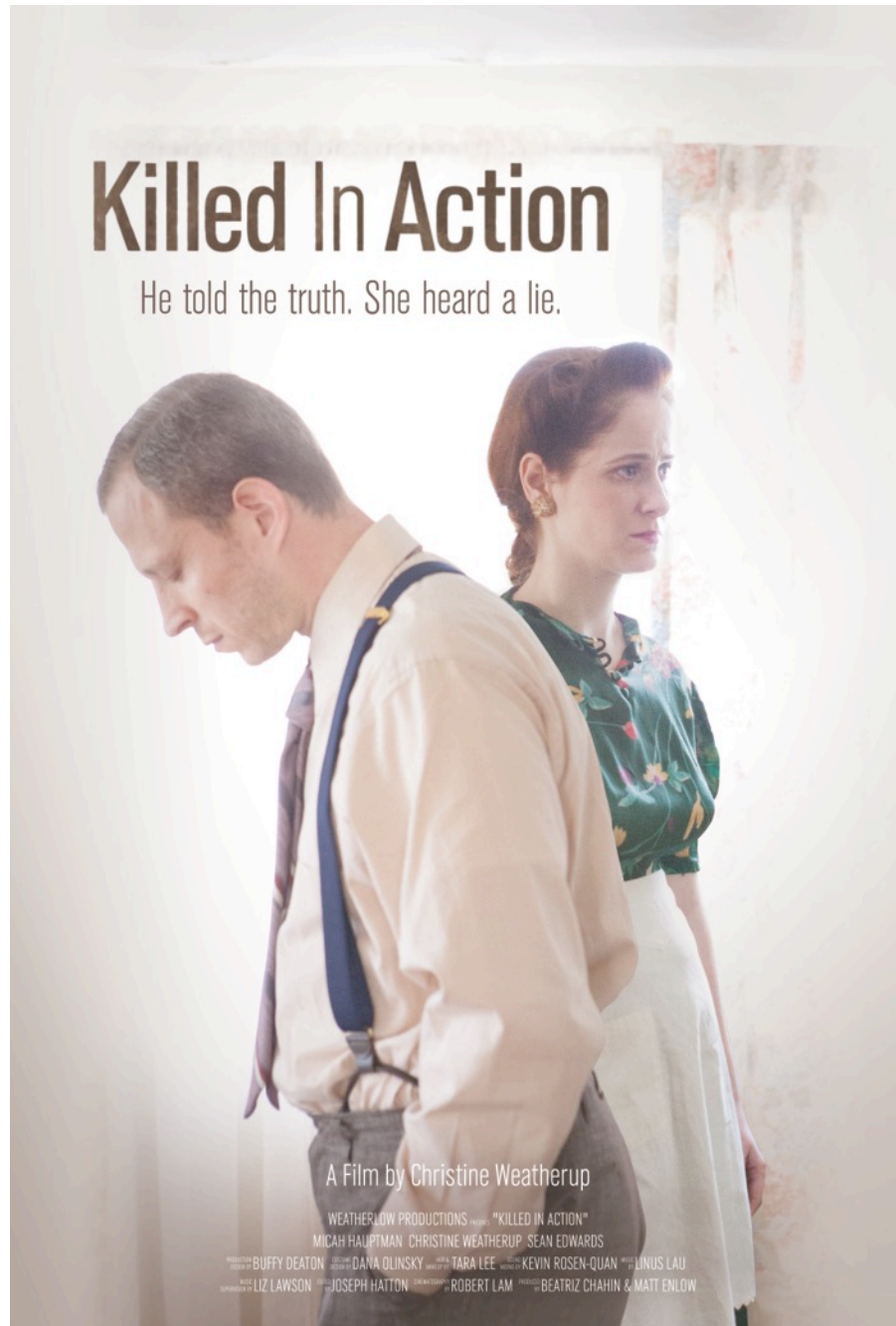


# Killed In Action

a film by Christine Weatherup



## Logline

A WWII widow meets a troubled veteran who served with her husband. He shares a dark secret he's been keeping from the war... but can she come to accept it?



## Synopsis

Set in 1948, ***Killed In Action*** is about an encounter between a troubled WWII veteran and the widowed wife of a fellow soldier. She invites the veteran over for dinner, planning to reminisce and celebrate the life of her deceased husband, but instead the vet decides to tell her the truth about what really happened overseas. They must decide whether to confront the truth, or live in the reality that they choose.

## How to program K.I.A.?

- **Her-story:** *History told from the female perspective*
- **Denial:** *Characters who are in denial or won't face reality*
- **Widowed:** *Movies centered around a widower*
- **American Gothic:** *Traditional American values called into question*
- **All is fair in love & war:** *Films about war and it's aftermath*
- **PTSD:** *Stories about people who suffer after a traumatic incident*
- **Period Pieces:** *Films that are set in a period other than the present*
- **Female Eye:** *Films made by women*
- **Crossroads:** *Things can no longer continue on this way*
- **The Choices That Define Us:** *How we respond, makes us who we are*
- **Actor/Director:** *Actors taking the helm*
- **The Valley Between Us:** *Characters who can't see eye to eye*
- *And, of course, **Best of the Fest** ;-)*

## Director's Statement

In war films, the stakes are high and emotions run deep; the questions at stake are of vital importance and the fate of our society hangs in the balance. While the epic scope of war is undoubtedly interesting, the smaller stories of ordinary people in extraordinary circumstances are what capture my attention. However, I rarely see myself in these stories of war. Usually, these films center on the men fighting on the frontlines. The women are merely afterthoughts, a symbol of what the men are fighting for. I wanted to know what it would be like for a woman during wartime, to tell a story centered on a woman left behind while her husband experiences the terrors of war. This curiosity led me to write *Killed in Action*.

Set in 1948 America, our story juxtaposes the life of a widowed housewife with that of a WWII veteran. Our story explores the toll that war takes on each person, and how they choose to live in the aftermath.

On a personal note, I was compelled to write this story because of my own grandfather's military service. In fact, I used the actual letters he wrote during the Second World War as props in the film. In the 20 years I had with my grandfather, I never once heard him discuss his service. While I don't believe he was tormented like Rick, it was just not "polite conversation." It wasn't until a Japanese historian contacted my grandfather that we learned anything about his important role fighting in the Pacific. I regret not having these talks myself, but I understand the need to bury those memories. In a peculiar way, by making this film, I feel closer to my grandfather than ever.





## Cast & Crew

### **CHRISTINE WEATHERUP** *Writer/Director/Actor*

A native of Los Angeles, Christine Weatherup has always been passionate about filmmaking. She began acting as a teenager and has worked consistently ever since. She graduated magna cum laude from USC, with a triple major in Cinematic Arts, Political Science and Theater, and has appeared extensively in television (including **Mad Men**, **Grey's Anatomy**, HBO's upcoming **Westworld**) and film (recent award winning indies **Bread and Butter** and **Echo Lake**). Additionally, she produced and acts in the hit webseries **Squaresville** (*Entertainment Weekly's* "Must List"). **Killed In Action** marks Christine's directing debut.

### **MICAH HAUPTMAN** *Actor*

Raised in Philadelphia, PA, Micah began acting after his hopes for a college basketball career were dashed. He began studying theater at West Chester University where he earned an undergraduate degree in theatre and then went on to get accepted into the prestigious Actors Studio, MFA program. Micah began popping up in small supporting roles in films such as **Iron Man**, Sundance hit **Finishing the Game** and SXSW fav **A Bag of Hammers**, and garnered a lot of attention with the acclaimed short film **The Mushroom Sessions** and fun Guest Stars on **The Glades**, **Supernatural** and **Lie To Me**. Most recently, Micah wrapped lead roles in the features **In Stereo**, **Bread and Butter**, and **Everest**.

### **BEATRIZ CHAHIN** *Producer*

Beatriz expressed an interest in working in film and television at a very early age. Originally from Katy, TX, she made her way to Los Angeles via the University of Texas - Los Angeles Program during her last semester at the University of Texas at Austin, where she graduated with a double major in Radio-Television-Film & Communication Studies, with an emphasis in Corporate Communication. Since realizing physical production was her passion, she's been fortunate enough to work on several television (**The Newsroom**, **Go On**) and new media projects (she met Christine & Matt while working on **Squaresville**). She is currently working in the Production Office of the Golden Globe winning comedy **Brooklyn Nine-Nine**.

### **MATT ENLOW** *Producer*

Matt Enlow is an Emmy nominated writer/director living in Los Angeles. His webseries **Squaresville** won Best Comedy, Best Writing and Best Ensemble in the 2013 IAWTV Awards. His work has been profiled in Entertainment Weekly, IndieWire, Variety, Huffington Post, Hello Giggles, and USA Today. He's worked with major entertainment companies like Google, Comedy Central, Maker Studios, Big Frame, Interscope Records, Coca Cola, College Humor, and helped found Strike.TV. Additionally, he's worked on countless television shows and web series for Comedy Central, and wrote and directed on the cult series **Mountain Man**, and **Engaged**.

## CAST

Rick Klein	Micah Hauptman
Alice Edwards	Christine Weatherup
Walter Edwards	Sean Edwards

## CREW

Writer/Director	Christine Weatherup
Producers	Beatriz Chahin & Matt Enlow
Director of Photography	Robert Lam
Editor	Joseph Hatton
Sound Mixer	Kevin Rosen-Quan
Production Designer	Buffy Deaton
Costume Designer	Dana Olinsky
Hair & Makeup Artist	Tara Lee
Assistant Director	Paige Potter
Script Supervisor	Amelia Ferroni
1 <sup>st</sup> AC	Nick Luecking
Digital Loader	Marshall James
Gaffer	Antonio Marasco
Camera PA	Thomas Houser
Composer	Linus Lau
Music Supervisor	Liz Lawson
Visual Effects	Oren Kaplan
Transportation	Roger Porter
Location Manager	Carol Smith
Associate Producer	Brad Bradley
Food Stylist	Rachel McConn
Production Assistant	Christine Crowley
	Enrique Guerrero
	Marcelena Mayhorn
	Kristina Mazzarelli
Still Photographer	Rachel Gray
Poster Design	Alyssa Homan

Running time: 12 minutes 40 seconds

[www.killedinactionfilm.com](http://www.killedinactionfilm.com)